

ANTWERP

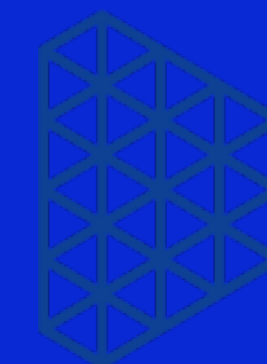
Towards a holistic view of the origin of multiple stellar populations in globular clusters

Elena Lacchin - University of Padua

Francesco Calura - University of Bologna

Joakim Rosdahl - Centre de Recherche Astrophysique de Lyon

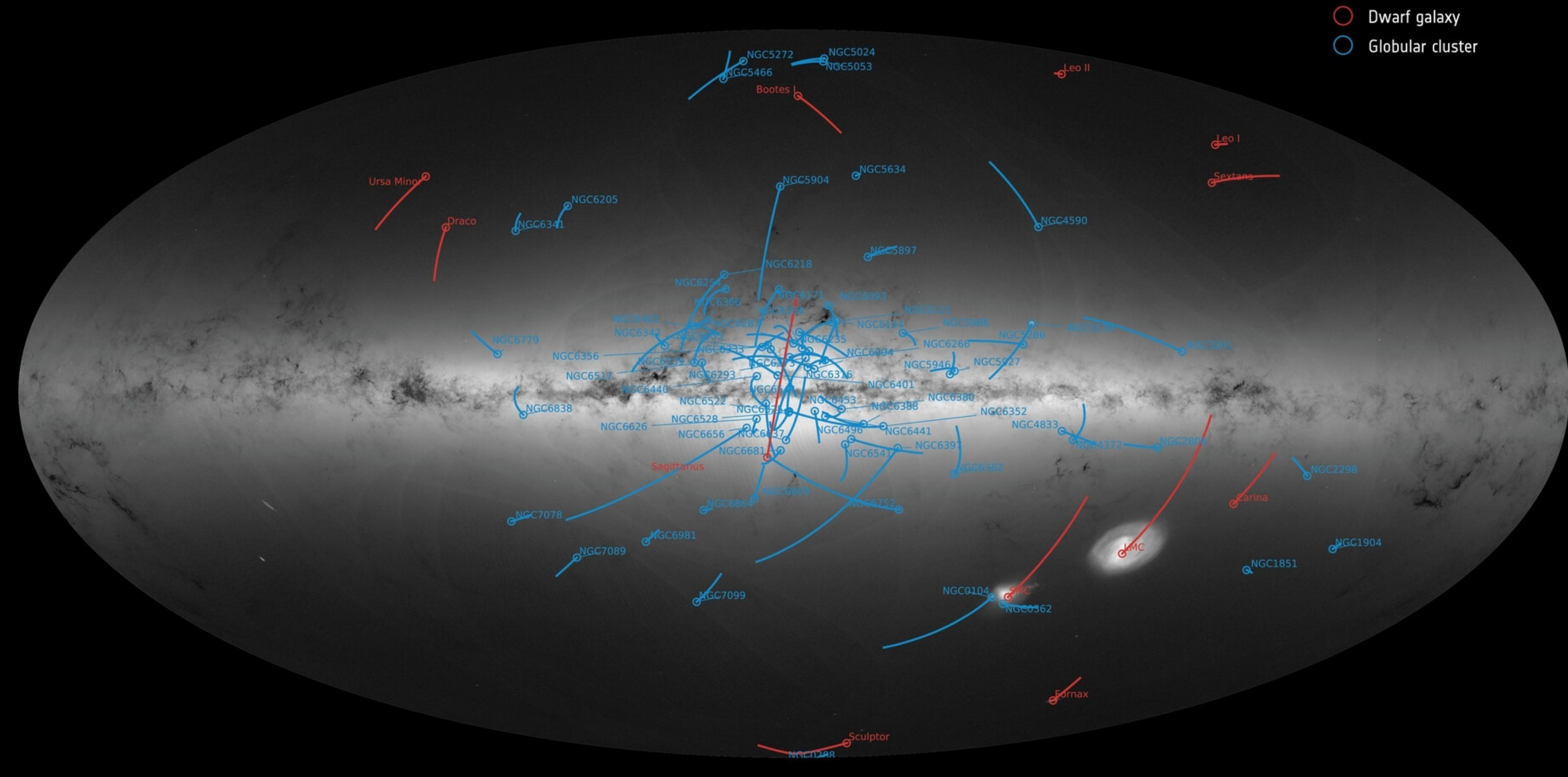
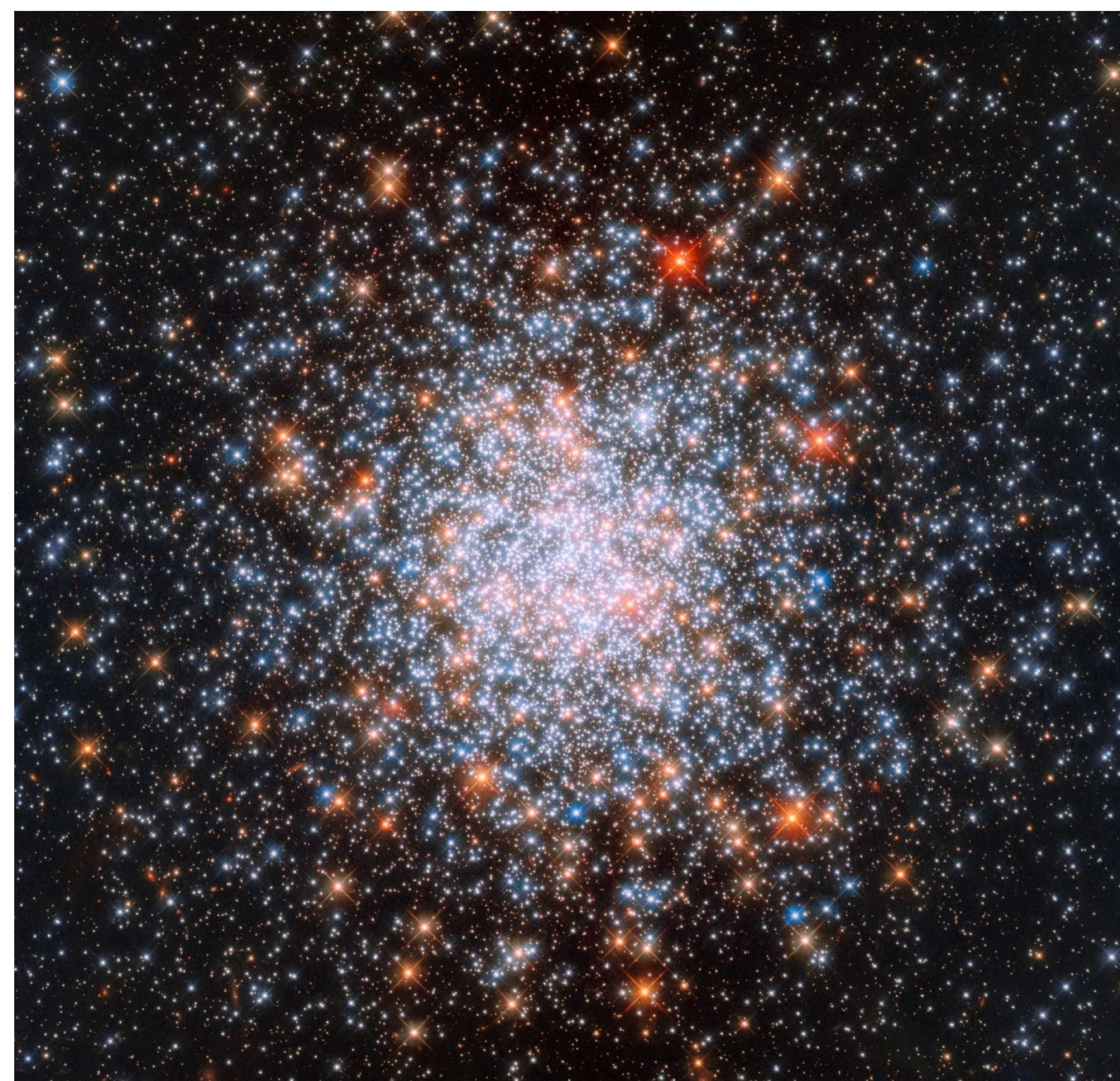
Alessandro Lupi - University of Insubria



Globular clusters

NGC 1866

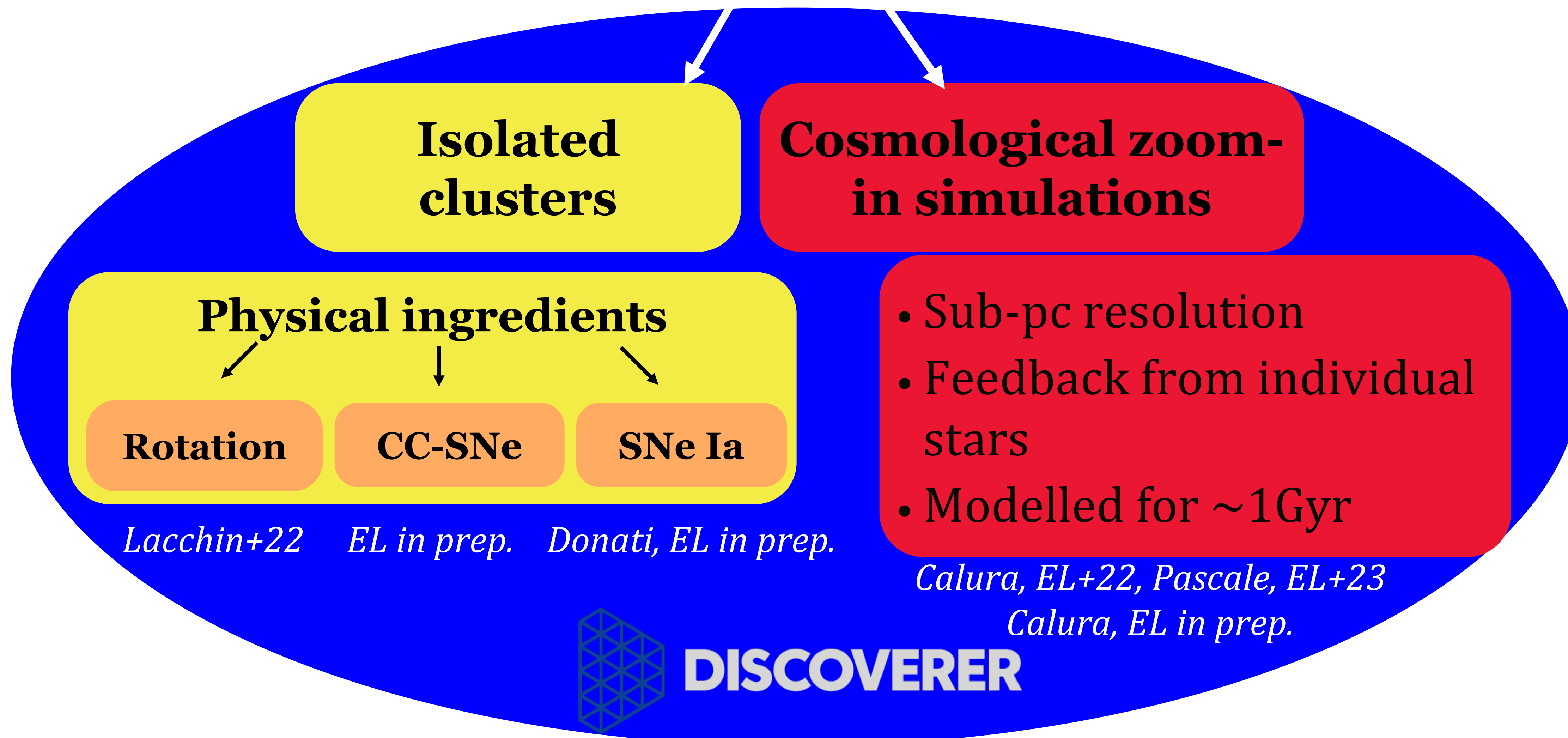
Credit: NASA / ESA / Hubble



- ★ Gravitationally bound stars
- ★ $N_{\star} = 10^5 - 10^6$
- ★ Age $\sim 10 - 12$ Gyr
- ★ Composed of multiple stellar populations with peculiar chemical composition

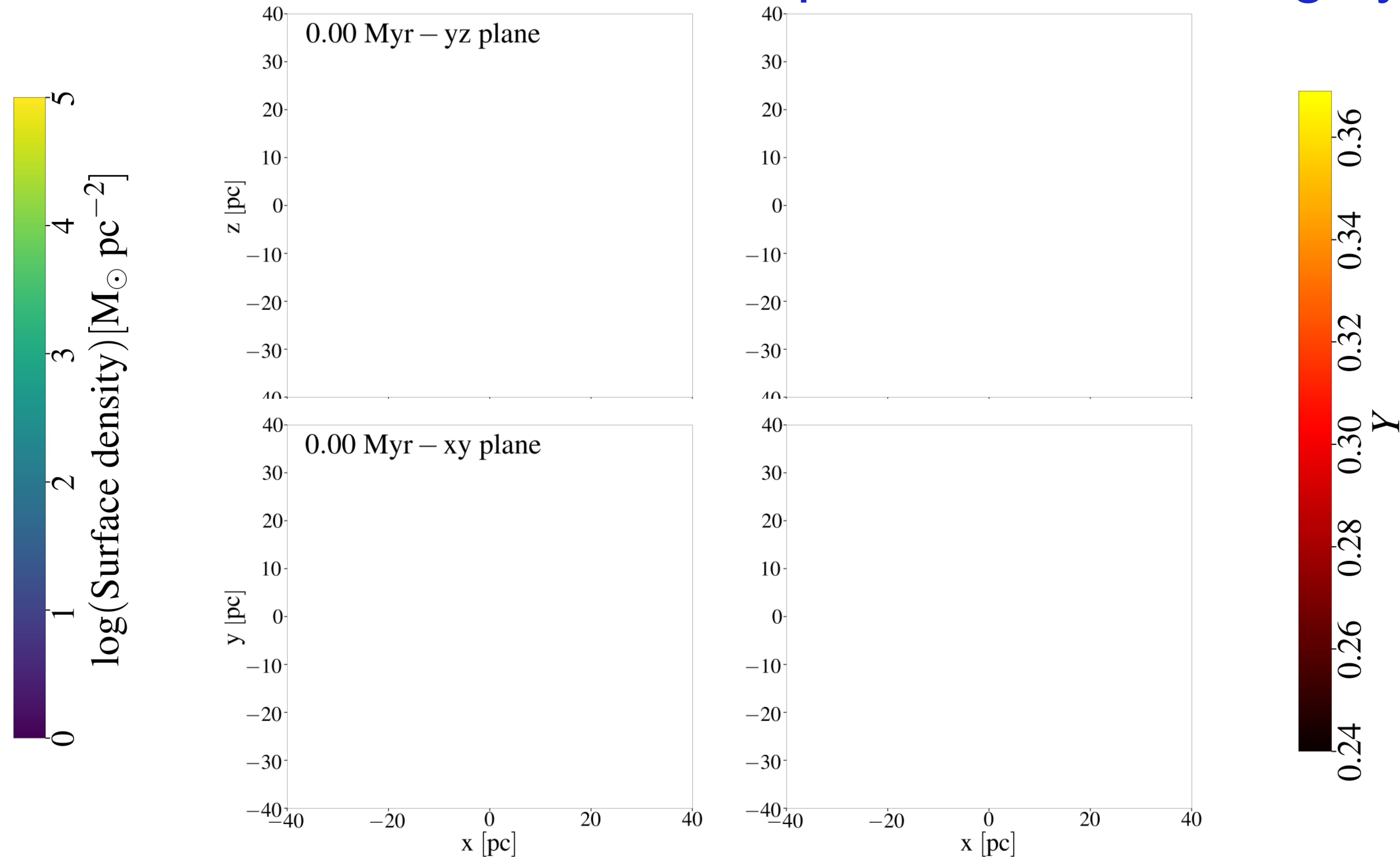


Modelling a realistic physical environment for the formation of multiple populations in globular clusters





The evolution of the stellar component in a rotating system

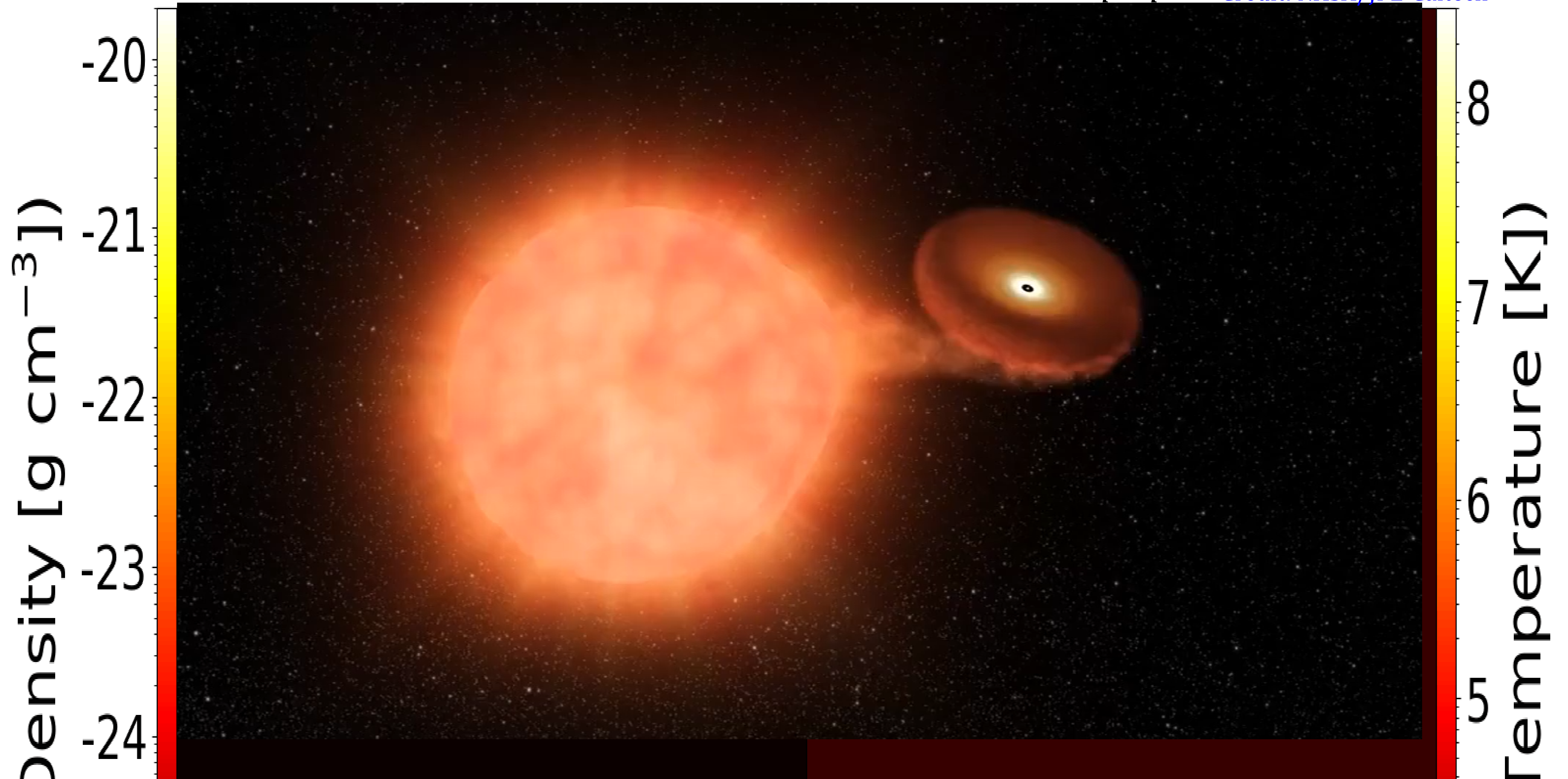




Supernova Ia feedback

Donati, EL in prep.

Credit: NASA/JPL-Caltech

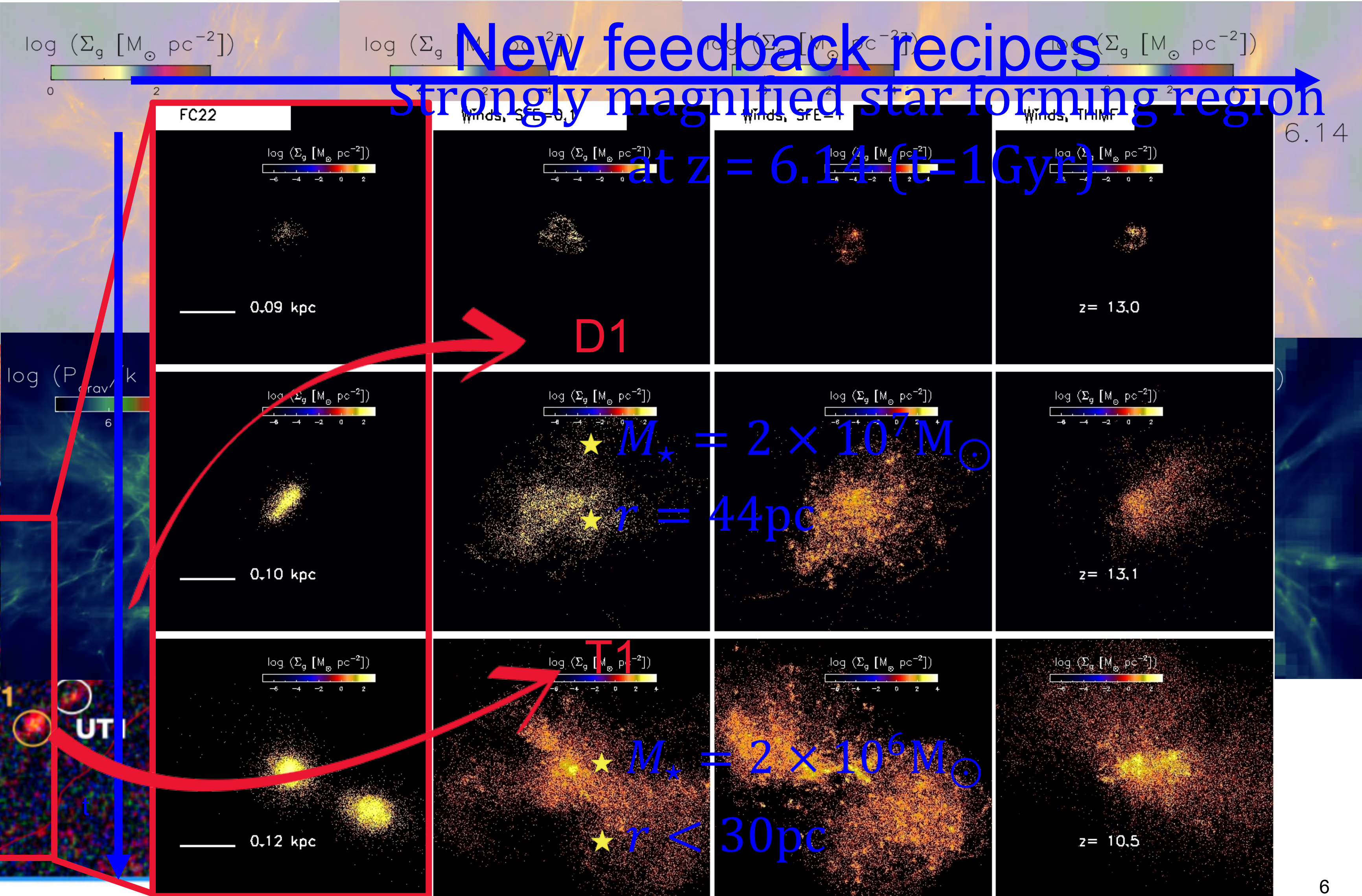
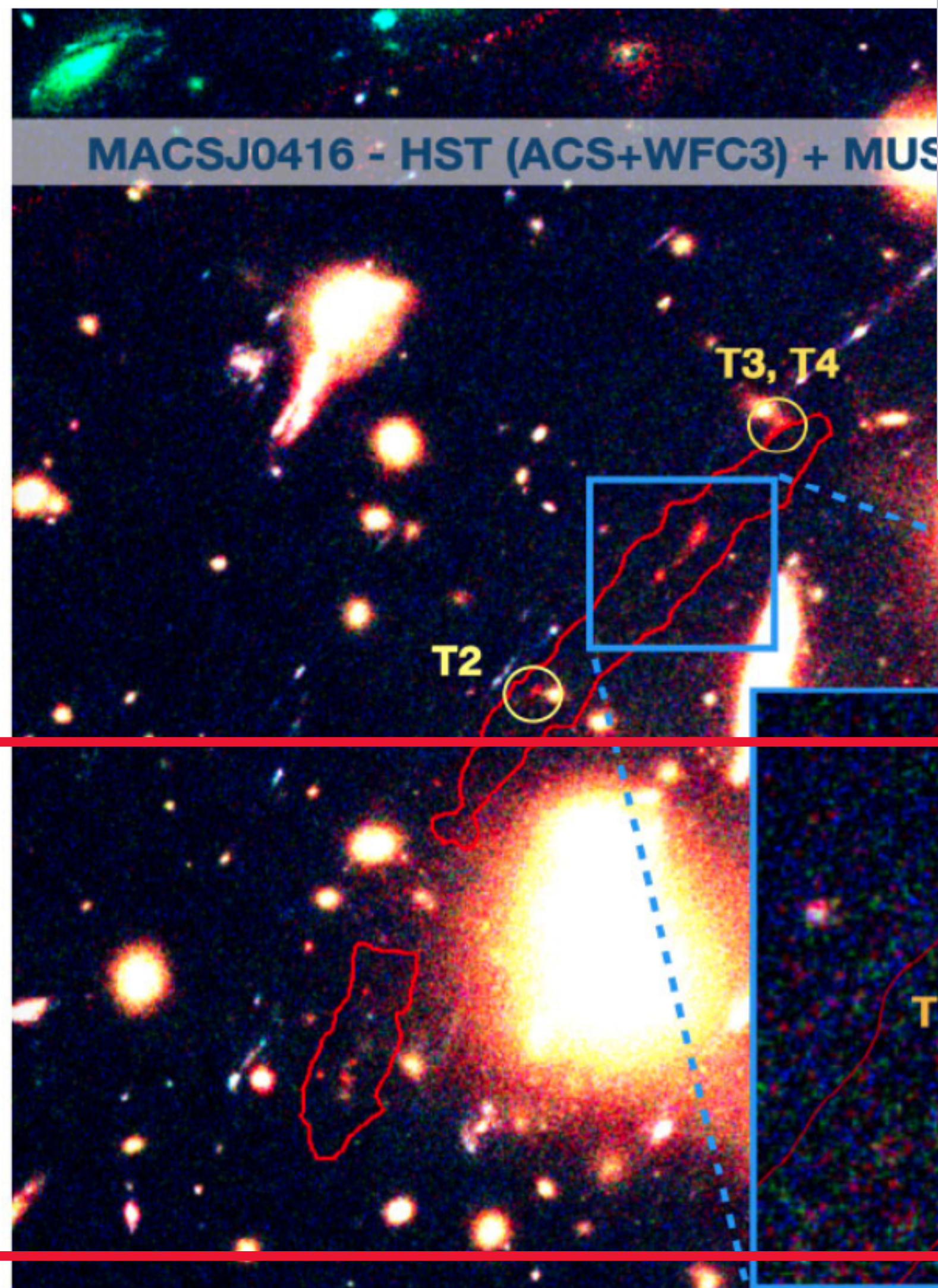




Cosmological simulations

Calura, *et al.* 2022

New feedback recipes
Strongly magnified star forming region
at $z = 6.14$ ($t = 1$ Gyr)



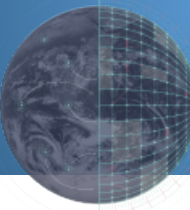


ANTWERP

Destination Earth

Building on European HPC excellence

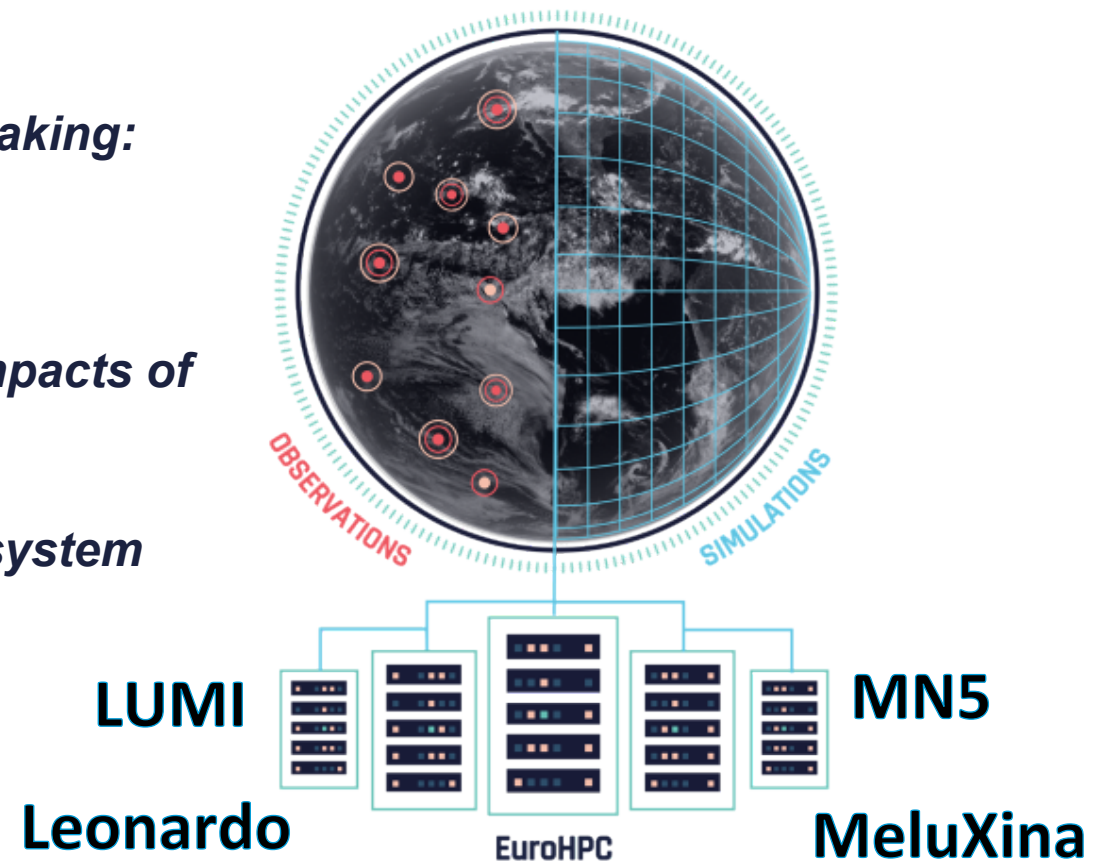
Nils Wedi

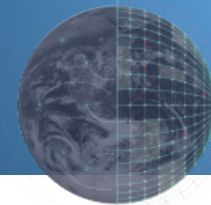


DESTINE: A DIGITAL REPLICA OF OUR PLANET TO RESPOND AND ADAPT TO CLIMATE CHANGE AND EXTREME EVENTS

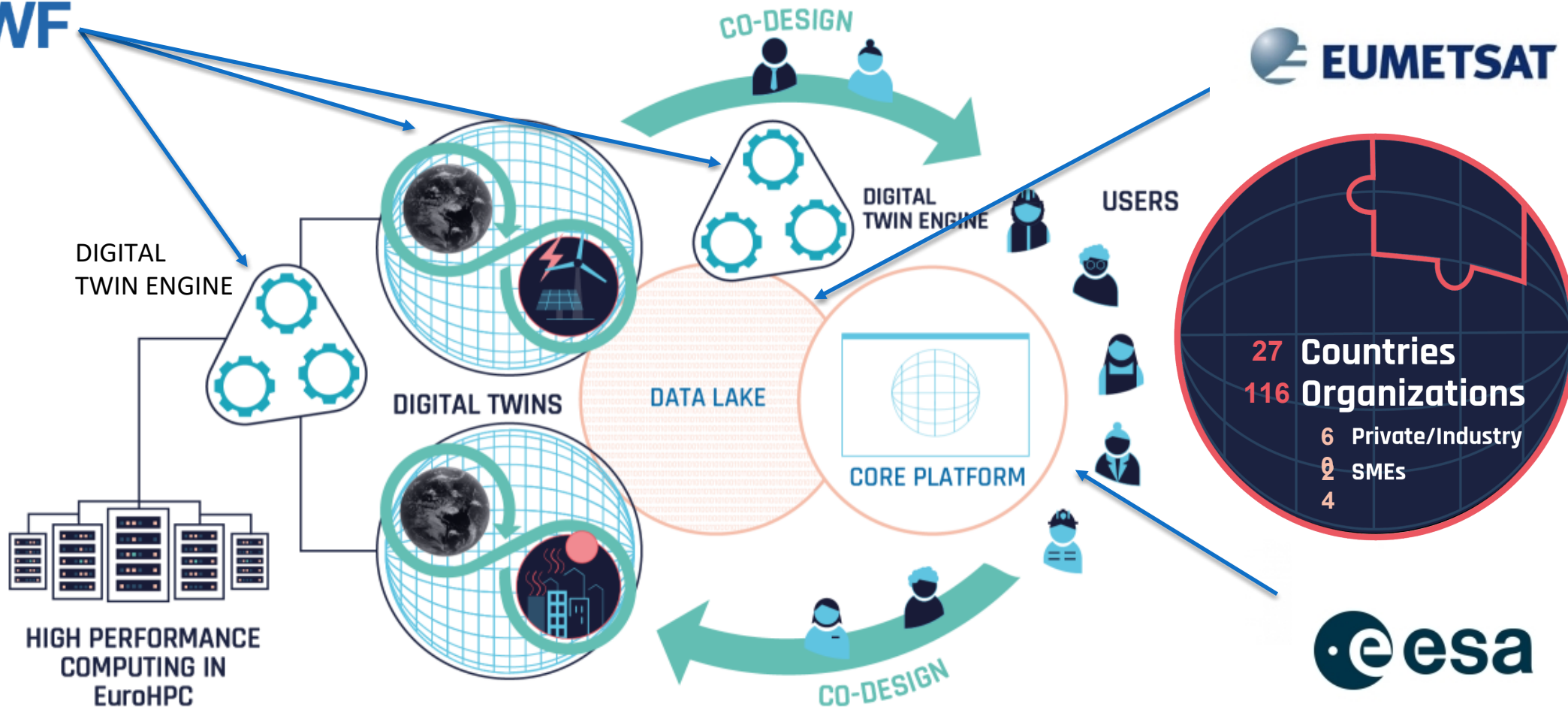
DestinE, in strategic partnership with EuroHPC Joint Undertaking:

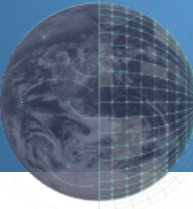
- *Establishes bespoke cutting-edge simulation capabilities*
- *Provides Earth-system information at scales where the impacts of extreme events and climate change are felt*
- *Fosters an innovative and thriving AI-enabled digital ecosystem*



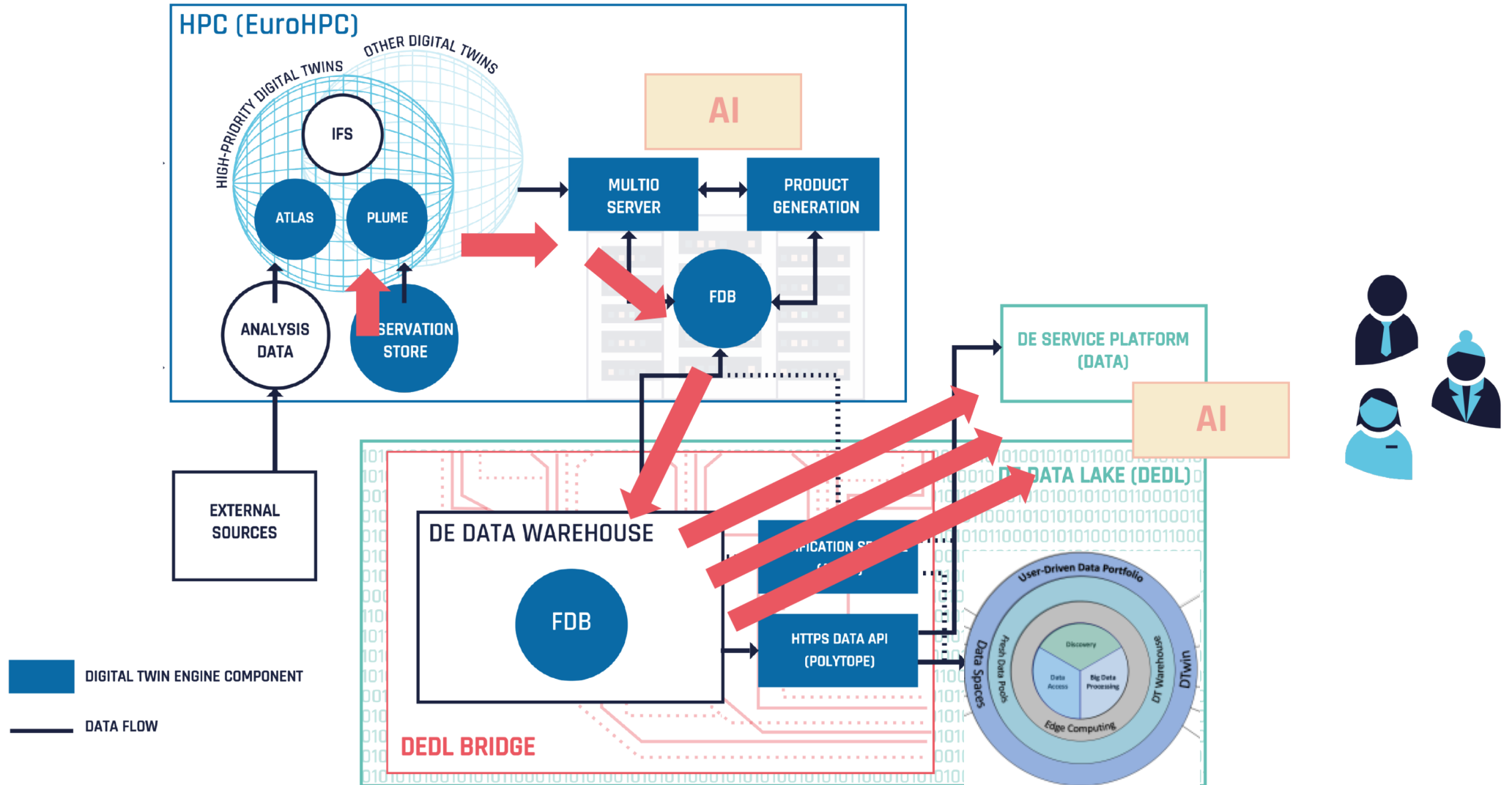


DESTINE: A EUROPEAN ENDEAVOUR





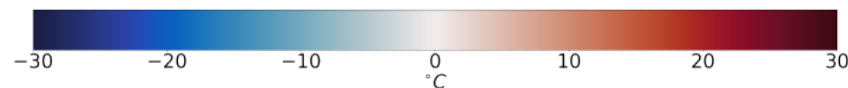
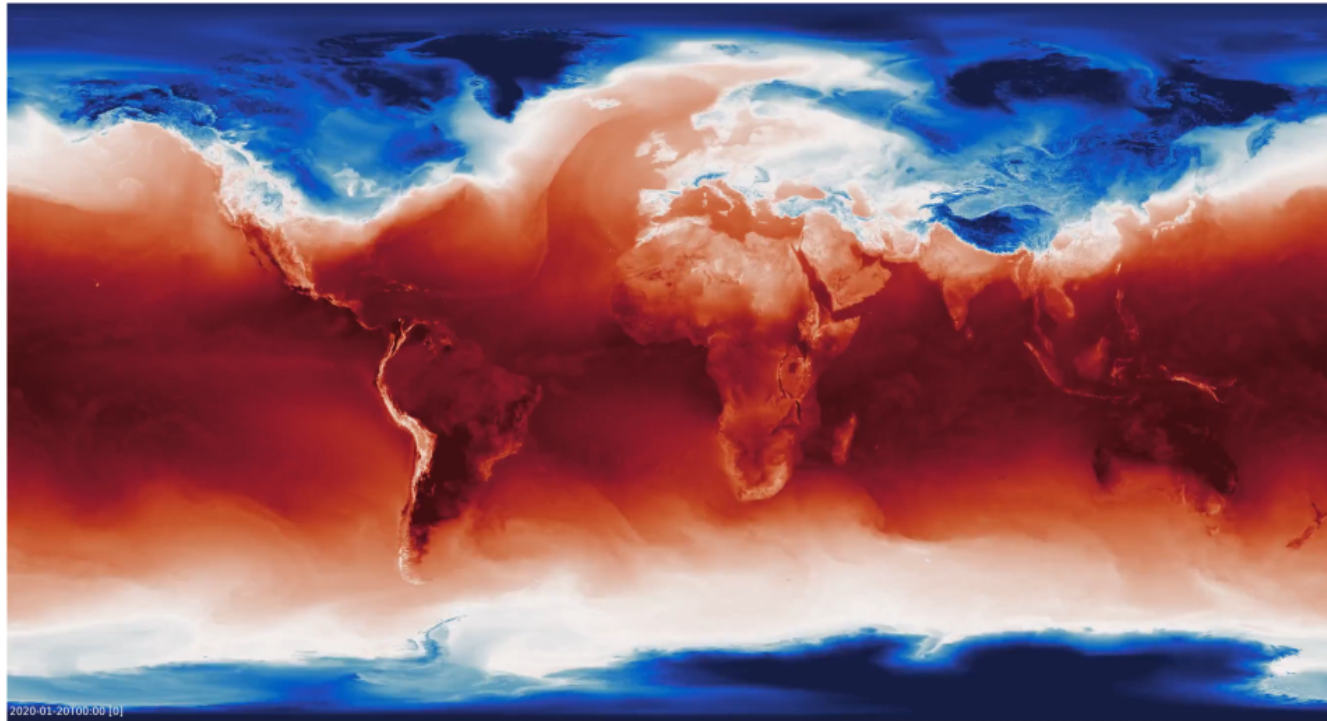
DESTINE COMPLEMENTS EUROHPC





CLIMATE DT: 1ST OPERATIONAL CAPABILITY FOR CLIMATE PROJECTIONS

To test the impact of certain events, scenarios or policy decisions on multi-decadal timescales



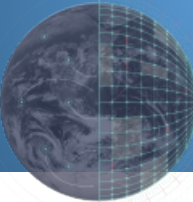
Regularly updated (yearly) and on-demand

1 x scenario 30 years

== 1-1.5 Million GPU h or 34 Million CPU-core h

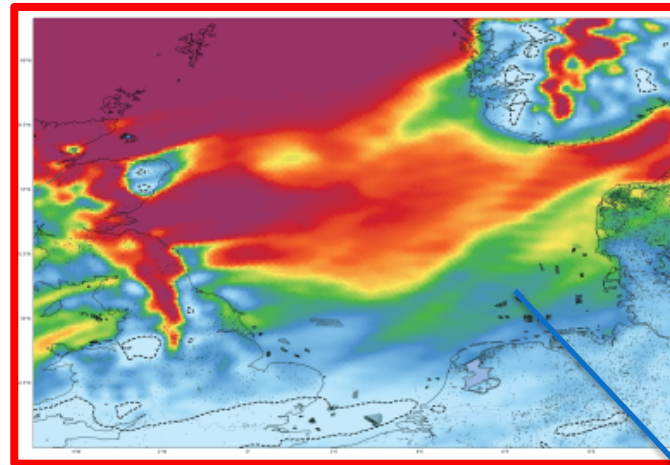
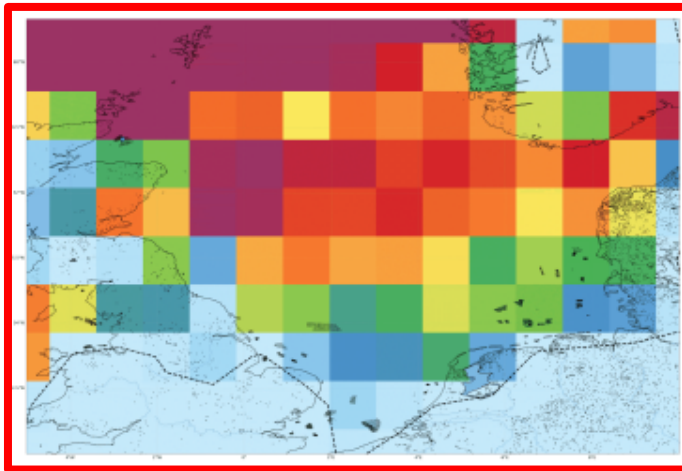
*How will the climate evolve
over the next decades
following scenario A or B or
if a particular event
happens?*



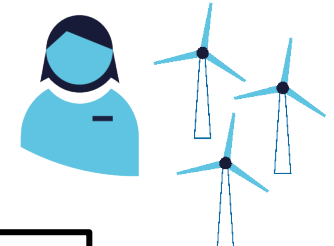


CLIMATE DT: GLOBALLY CONSISTENT CLIMATE INFORMATION AND SERVICES

K To allow industry, including SMEs, to make well informed business decisions



How to optimize a portfolio of windfarms to maximize energy yield ?

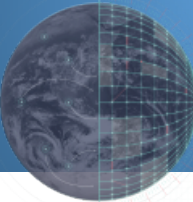


Current state-of-the-art:

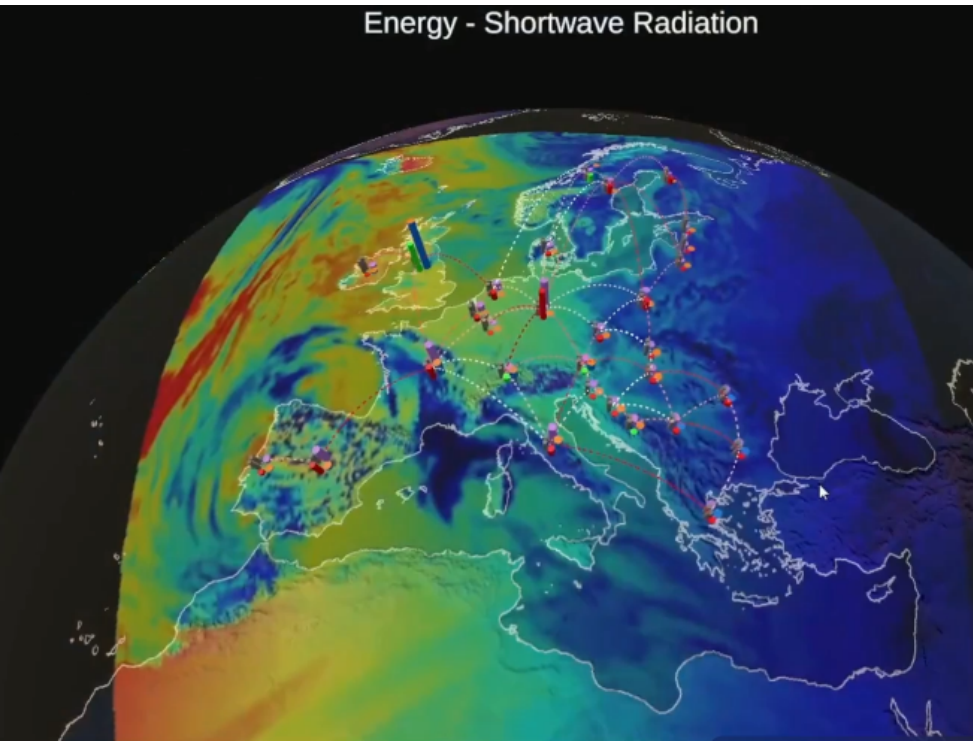
- Low temporal resolution: 3 or 6-hourly data.
- Low spatial resolution: regional downscaling needed
- No information at hub height
- Large data extraction required

Climate DT:

- Global 1-hourly data.
- 5km resolution, globally
- 100 m wind speed
- Customized information is produced and streamed for any global locations

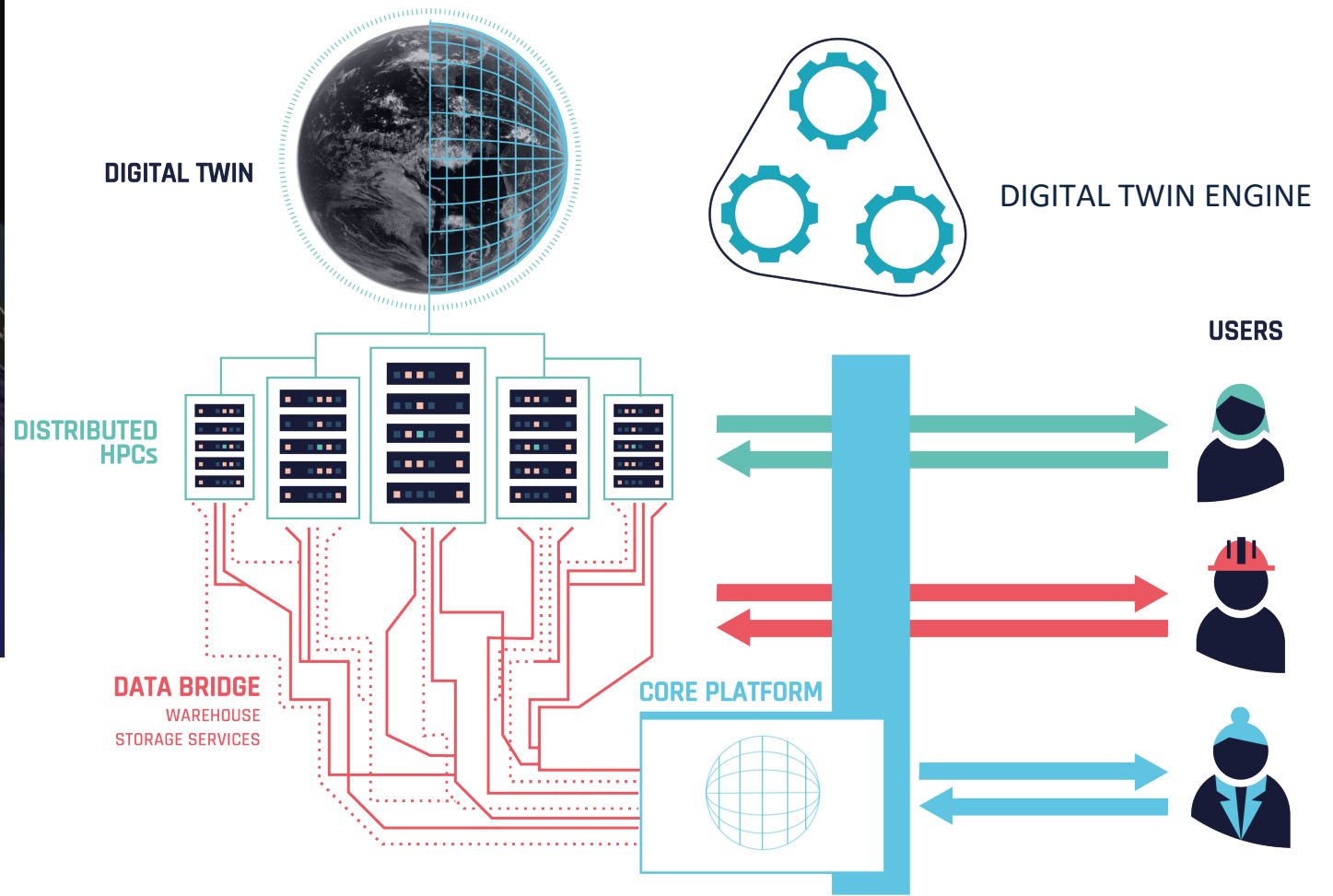


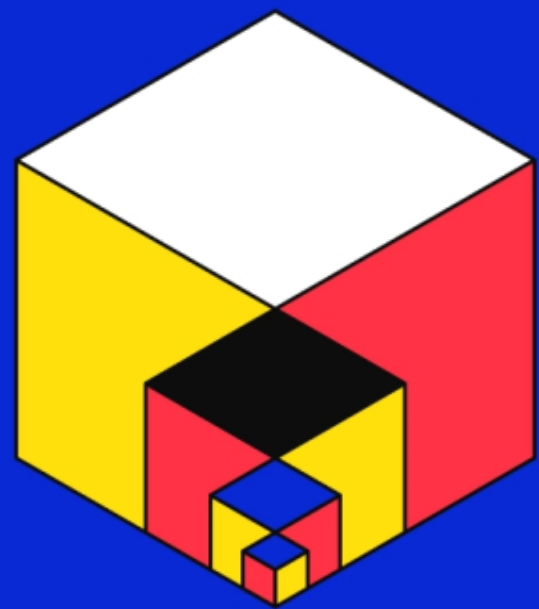
ENABLING USERS TO EXPLOIT THE DESTINE SYSTEM...



Exprivia/CMCC/DLR

Renewable energy online supply/demand/redistribution in a changing climate





ANTWERP

Empowering Structural Biology: Innovations in Structure-Based and Diffusion-Based Protein Design through High-Performance

Computing
Wouter Van Putte
CEO PUXANO





STRUCTURE BASED PROTEIN RESEARCH

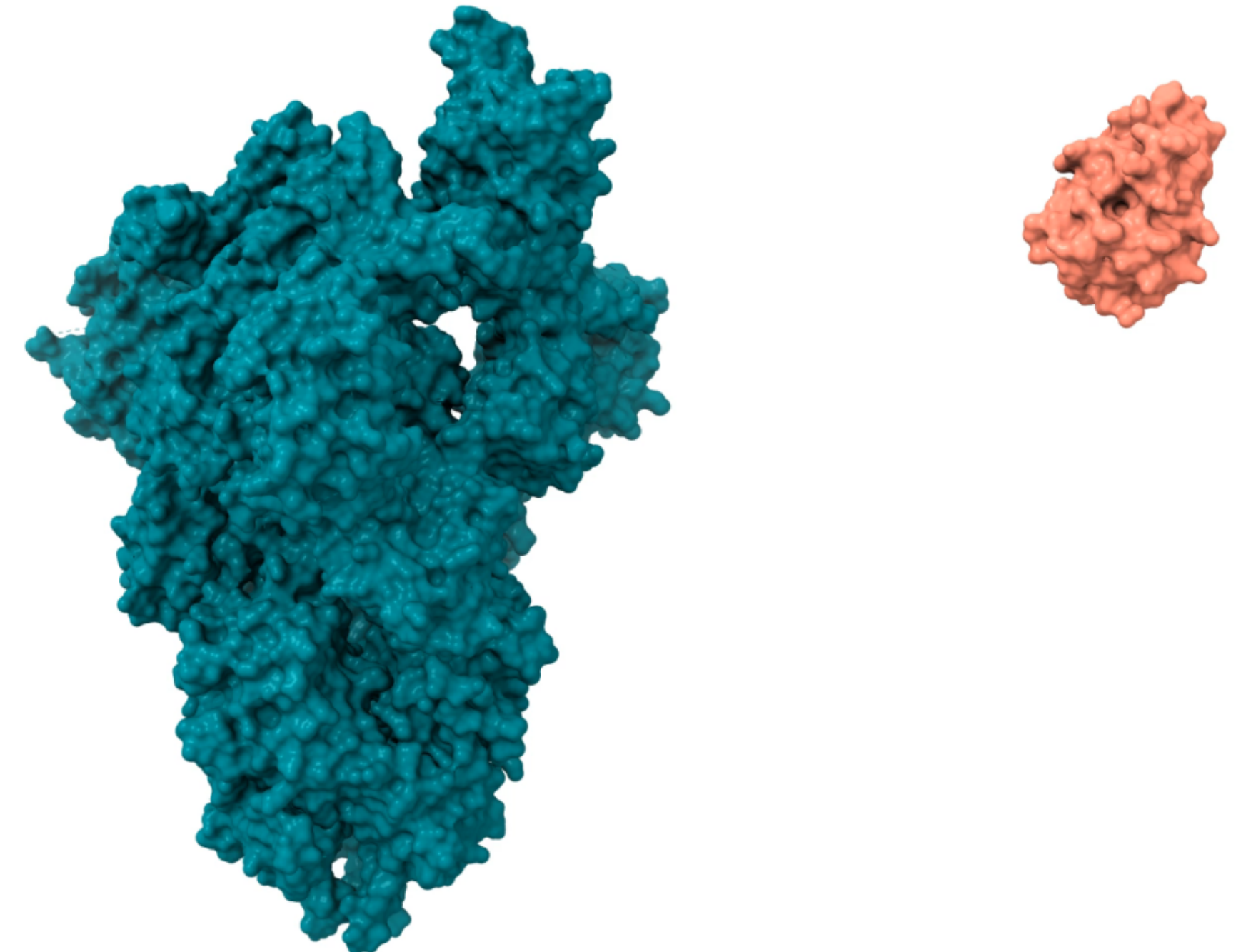


POWDER

[...]
 PLSETKCTLKSFTVEKGIYQTSNFRVQPTESIVRFPNI
 TNLCPFGEVFNATRFASVYAWNRRKRISNCVADYSVL
 YNSASFSTFKCYGVSPTKLNLCFTNVYADSFVIRGD
 EVRQIAPGQTGKIADYNYKLPDDFTGCVIAWNSNNL
 DSKVGGNYNYLYRLFRKSNLKPFERDISTEIQAGST
 PCNGVEGFNCYFPLQSYGFQPTNGVGYQPYRVVLS
 FELLHAPATVCGPKKSTNLVKNKCVNFNGLTGTG
 VLTESNKKFLPFQQFGRDIADTTDAVRDPQTLEILDI
 TPCSFGGVSVITPGTNTSNQVAVLYQDVNCTEVPVAI
 HADQLTPTWRVYSTGSNVFQTRAGCLIGAEHVNSY
 ECDIPIGAGICASYQTQTNSPRRARSVASQSIIAYTMS
 LGAENSVAYSNNSIAIPTNFTISVTTEILPVSMTKTSV
 DCTMYICGDSTECSNLLLQYGSFCTQLNRALTGIAV
 [...]

SEQUENCE

QVQLVESGGGLMQAGGSLRLSCAVSGRTFSTAAMG
 WFRQAPGKEREFVAAIRWSSGSAYYADSVKGRFTIS
 RDKAKNTVYQLQMNSLKYEDTAVYYCASYQATRSLLS
 DYATWPYDYWGQGTQVTVSSKHHHHHHH



STRUCTURE

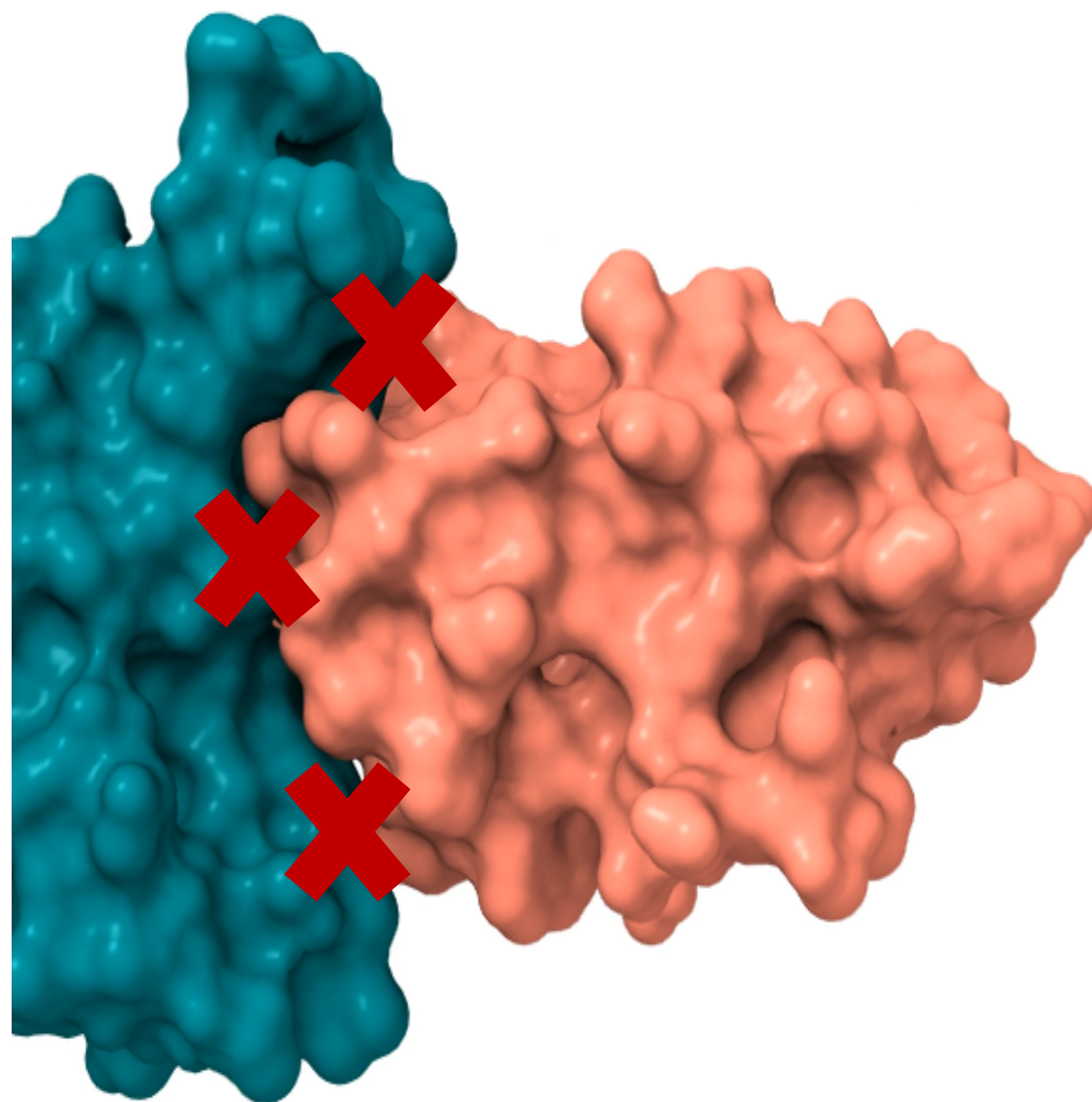


STRUCTURE BASED PROTEIN ENGINEERING



procondor
by PUXANO

RLSCAVSGRTFSTAAMGWFRQAPGKERE
RLSCAVSGRTFSTAAMGWFRQAPGKERE
RLSCAVSGRTFSTAAMGWFRQAPGKERE



procondor dashboard

Proteins

Create protein

P40189 - null

P40189 - null

Interleukin-6 receptor subunit beta

Residue Numbers 1 50 100 150 200 250 300 350 400 450 500 550 600 650 700 750 800 850 90018

Residue Letters

molecular_processing

topological_domain

functional_domain

disordered_region

motif

compositional_bias

modified_residue

glycosylation

inter_disulfide_bond

secondary_structure

functional_domains

amino_acid_conservation

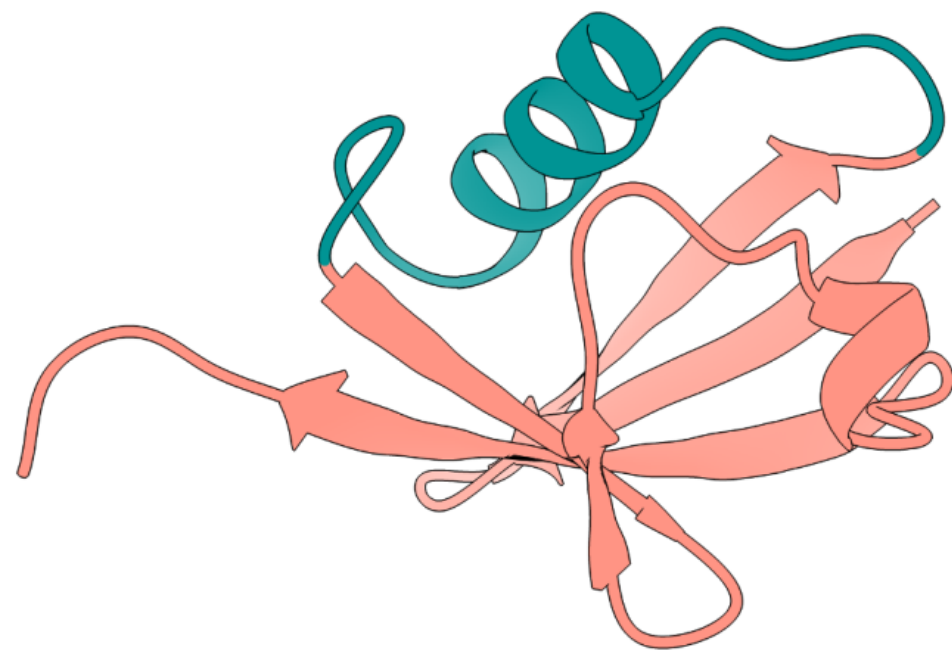
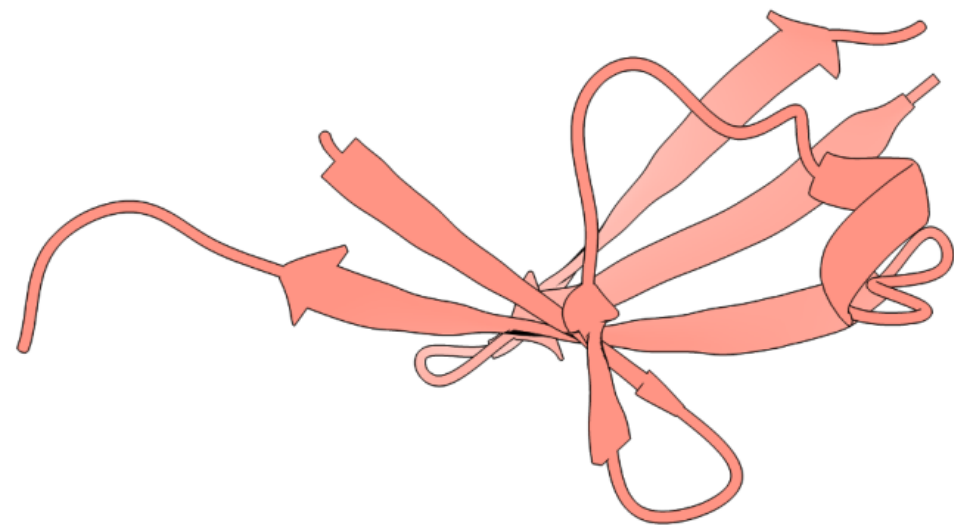
alphafold_confidence

secondary_structure

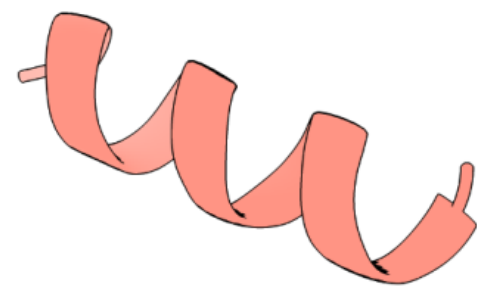
alphafold_structural_domain



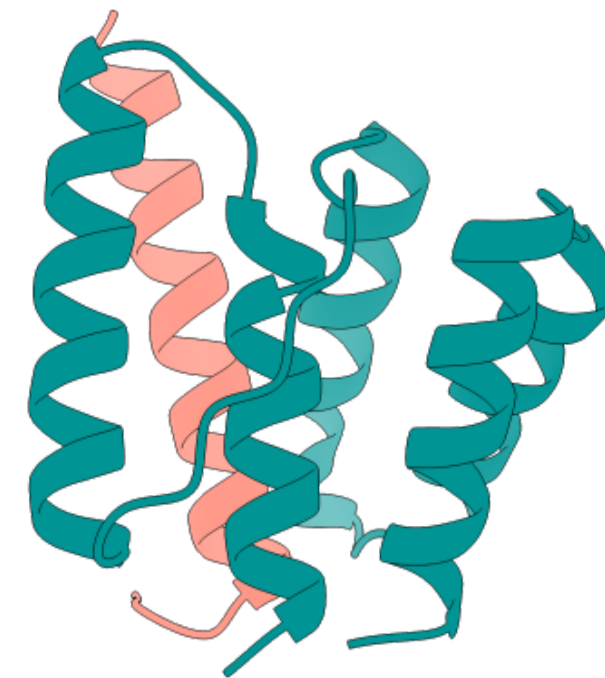
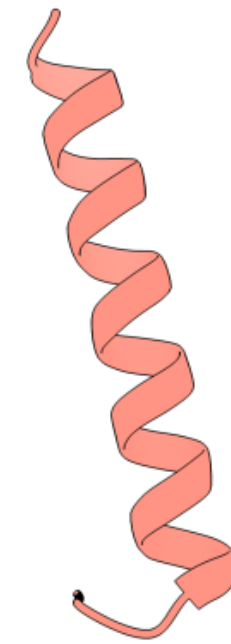
DIFFUSION-BASED PROTEIN DESIGN



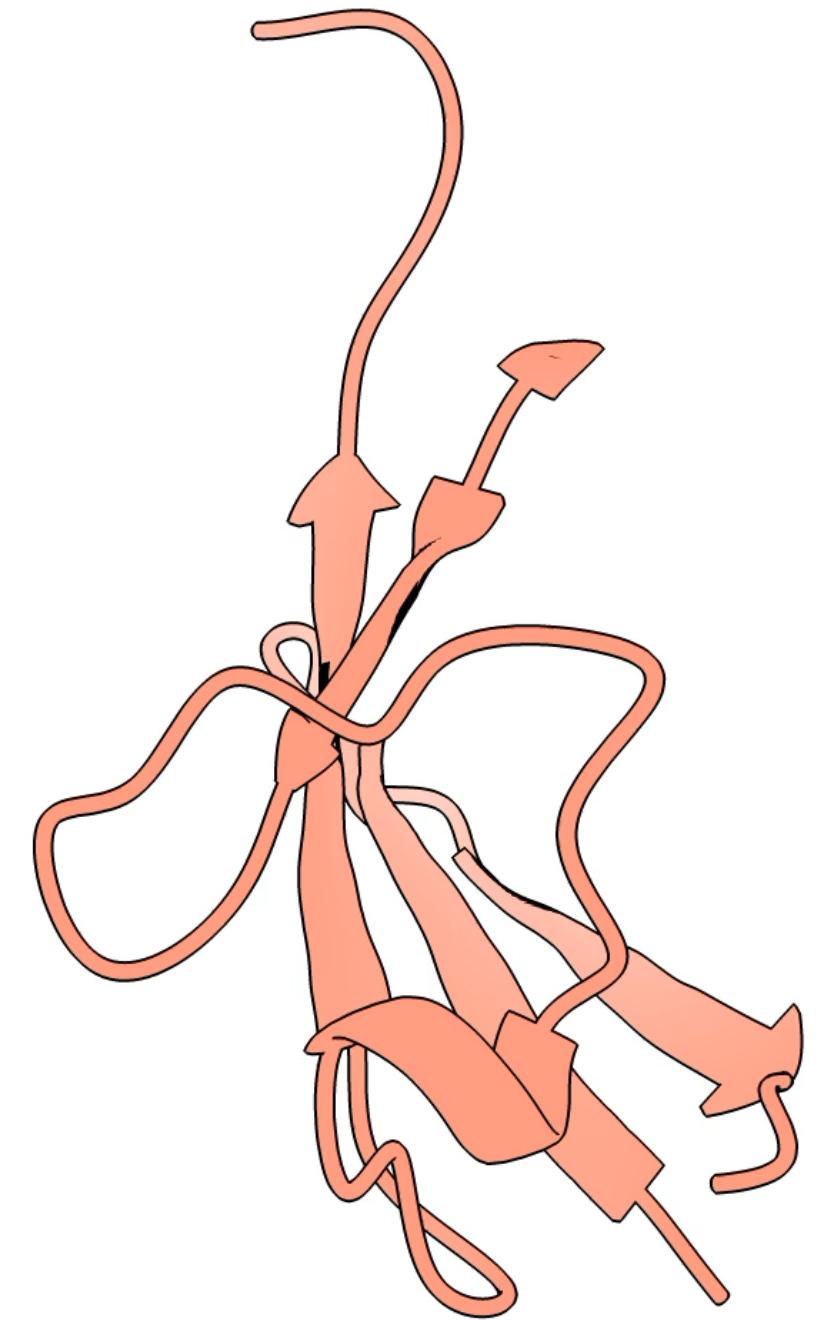
INPAINTING



SCAFFOLDING



BINDER DESIGN

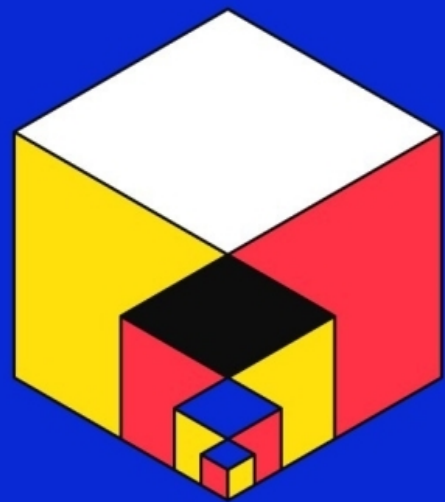




The importance of
EuroHPC for young
innovative startups.



PUXANO



ANTWERP

Training acoustic models at the National Library of Sweden

Leonora Vesterbacka
National Library of Sweden



National Library of Sweden

- collects, preserves and gives access to everything **published** and **broadcasted** in Sweden
- legal deposit law from 1661
- 18 million objects



PDF Converter

Only two pages were converted.

Please **Sign Up** to convert the full document.

www.freepdfconvert.com/membership